



**2020 SMP Package V (La Haya and Rosewood)  
Solicitation Number: CO-00300  
Job No.: 19-5011 & 19-5511**

**ADDENDUM 1  
September 25, 2019**

To Bidder of Record:

This addendum, applicable to work referenced above, is an amendment to the bid proposal, plans and specifications and as such will be a part of and included in the Contract Documents. Acknowledge receipt of this addendum by entering the Addendum number and issue date on the space provided in submitted copies of the bid proposal.

**RESPONSES TO QUESTIONS**

No questions were received for this solicitation.

**CHANGES TO THE SPECIFICATIONS**

No changes were made to the specifications for this solicitation.

**CHANGES TO THE PLANS**

1. Replace sheets 4 and 5 (La Haya) of the water and sewer planned work, refer to the attached sheets. On the water and sewer plans the only changes made were to show the fiber optic line labelling. No further changes were made.

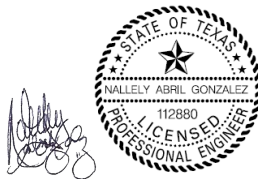
**CLARIFICATIONS**

1. Changes to the water and sewer plans were to show fiber optic lines' labelling for La Haya site. No further changes were made.

**END OF ADDENDUM**

This Addendum, including this one (1) page, is five (5) pages with attachments in its entirety.

Attachments: Revised Water Plan Sheets 4 and 5 (2 pages), Revised Sewer Plan Sheets 4 and 5 (2 pages)

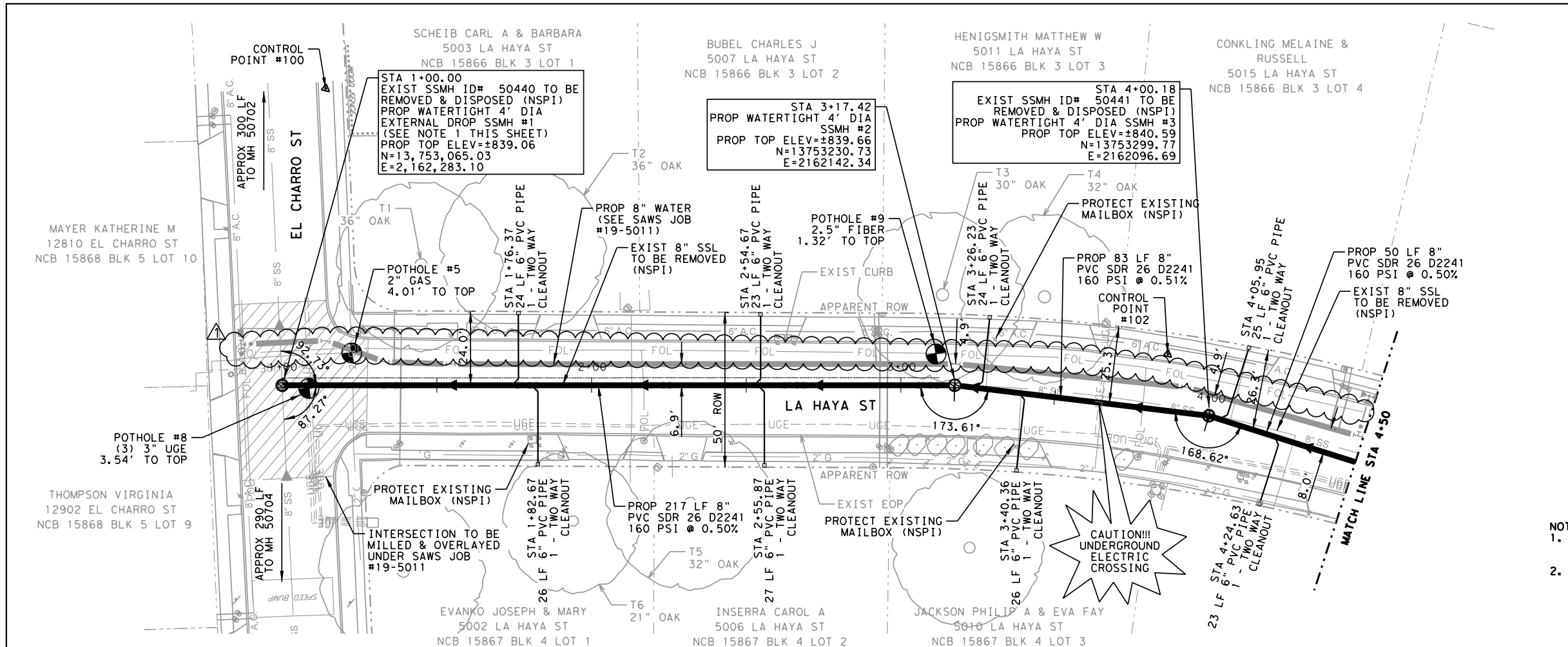


September 25, 2019

Nallely Abril Gonzalez, P.E.  
K Friese + Associates, Inc. (TBPE F-6535)





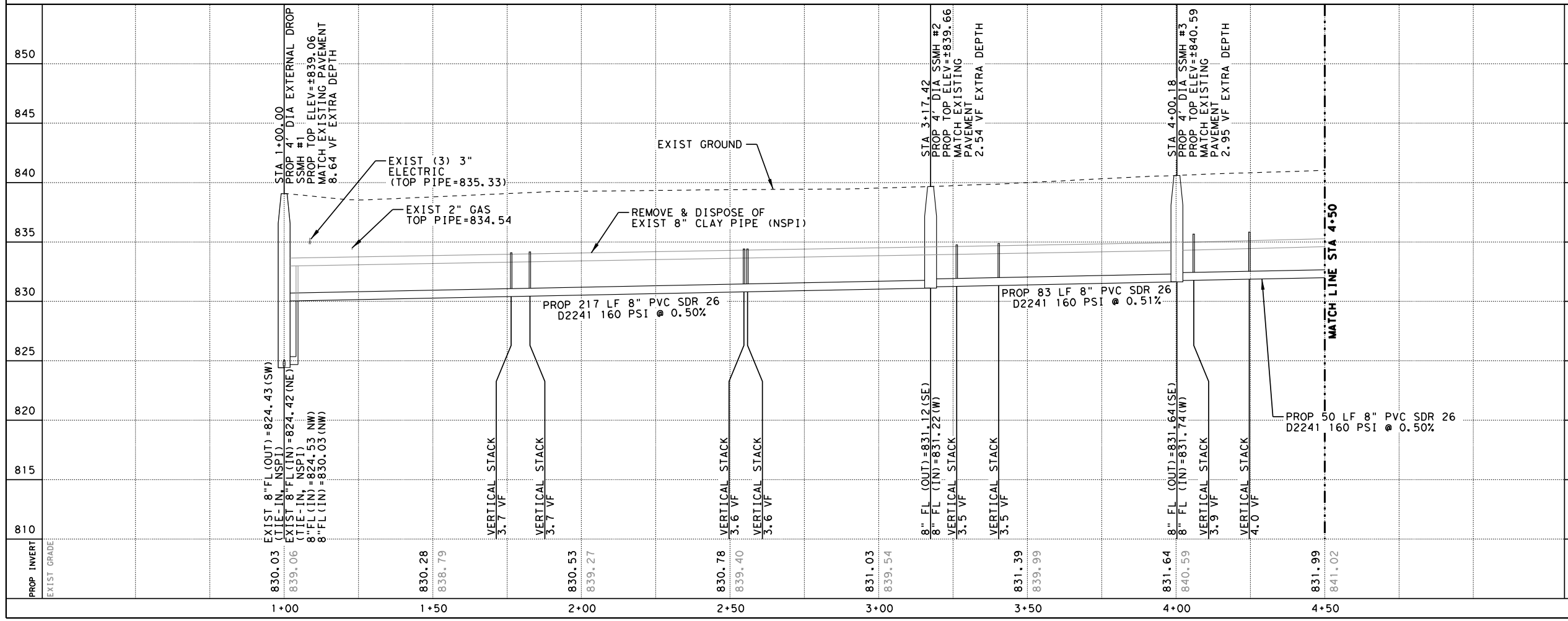


**LEGEND**

- PROP SANITARY SEWER LINE
- PROP MANHOLE
- PROP SEWER LATERAL & CLEANOUT
- EXIST EDGE OF PAVEMENT
- EXIST WOOD FENCE
- EXIST CHAINLINK FENCE
- EXIST OVERHEAD UTILITIES
- EXIST WATERLINE
- EXIST SANITARY SEWER LINE
- EXIST GAS LINE
- PROPERTY LINE
- UTILITY POLE
- EXIST TREE TO PROTECT
- EXIST TREE

ESTIMATED QUANTITIES			
ITEM NO.	DESCRIPTION	UNIT	QUANTITY
203	TACK COAT	GAL	17.5
205.2	HOT MIX ASPHALTIC PAVEMENT - TYPE B (10" COMPACTED DEPTH)	SY	168.8
205.4	HOT MIX ASPHALTIC PAVEMENT - TYPE D (2" COMPACTED DEPTH)	SY	174.8
550	TRENCH EXCAVATION SAFETY PROTECTION	LF	350
848	8" PVC GRAVITY SANITARY SEWER PIPE (SDR 26-2241, 160 PSI), (ALL DEPTHS)	LF	350
852	SANITARY SEWER MANHOLE (0'-6")	EA	2
852	SANITARY SEWER MANHOLE DROP (0'-6")	EA	1
852	EXTRA DEPTH MANHOLES (GREATER THAN 6')	VF	14.1
854	SANITARY SEWER LATERALS, (SDR 26, ASTM 2241, 160 PSI)	LF	198
854	TWO-WAY SANITARY SEWER CLEANOUT	EA	8
860	VERTICAL STACKS	VF	29.5
866	PRE SEWER MAIN TELEVISION INSPECTION (8"-24")	LF	350
866	POST SEWER MAIN TELEVISION INSPECTION (8"-24")	LF	350

- NOTES:**
- CONTRACTOR SHALL REFER TO SAWS STD DETAIL DD-852-08 FOR EXTERNAL DROP.
  - TREES FOUND ON PRIVATE PROPERTY WITH BRANCHES THAT OVERHANG ONTO PUBLIC ROW, WHERE IDENTIFIED, MAY REQUIRE TRIMMING, PRUNING, AND ROOT PROTECTION FOR CONSTRUCTION AND SHALL FOLLOW APPROVED TREE PERMIT (NSPI). REFER TO SHEET 2, NOTE 5 AND TREE PROTECTION TABLE.



HORIZONTAL SCALE  
20'

VERTICAL SCALE  
5'  
10'

09/25/19

**K-FRIESE + ASSOCIATES**  
PUBLIC PROJECT ENGINEERING  
10001 Reunion Place  
Suite 404  
San Antonio, Texas 78216  
P 210.491.2391 F 512.338.1784  
TBP# Firm Number 6535  
www.kfriese.com

ADDENDUM NO. 1	ADF	NAG	9/25/19	
No.	Revision	Drawn	Approved	Date
<b>REVISIONS</b>				
<b>2020 SMP PACKAGE V (LA HAYA)</b> <b>SANITARY SEWER PLAN AND PROFILE BEGIN TO STA 4+00</b>				
DEVELOPER:		BUDGET PROJ.		
SUBMITTED				
APPROVED				
MAP No.			SHEET 4	
DR.	CK.	JOB No. 19-5511		OF 6

